

# DIY 48V 16S BATTERY BOX

280/ 302/ 306/ 304/ 314/ 320ah



**Step 1.** Tear off the long epoxy insulation sheet and tape it to the inside of the box



**Step 2.** Test the cells  
Make sure the voltage is consistent



**Step 3.** Stick on the EVA tapes, Please notice if your cells are swollen, we don't recommend sticking the EVA tapes on.

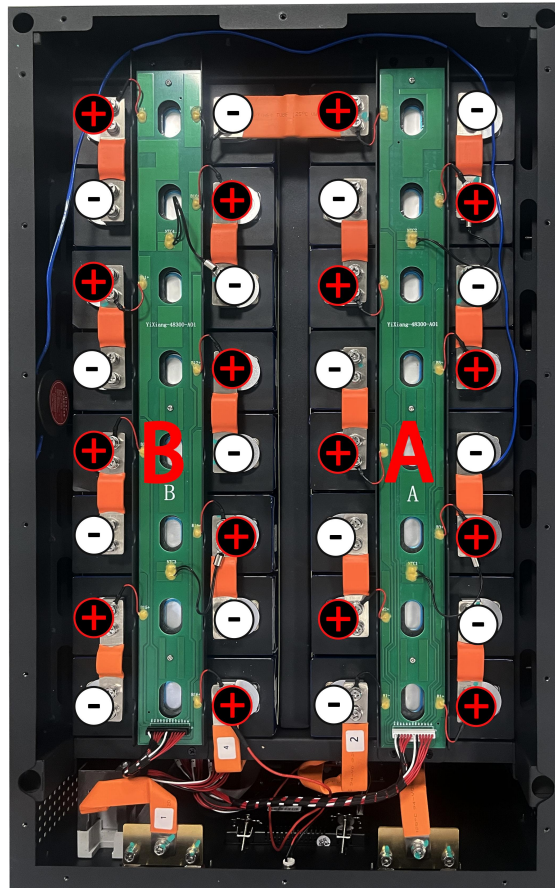


**Step 4.** Put on the epoxy boards, and put the cells one by one, each cell has one epoxy board between



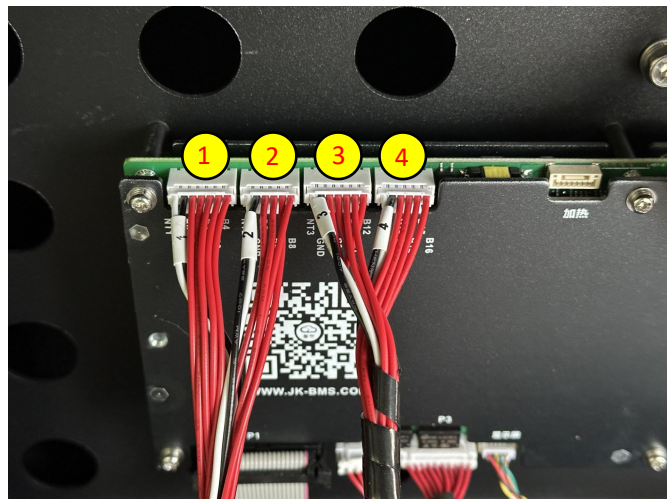
### Attention1:

- 1, Make sure the cells are in the right place
- 2, Put the B-board on the left, A-board on the right side
3. The battery is placed as shown in the picture.



### Attention2:

- 1, Before assembly, please check the connection line sequence of BMS (1- 2- 3- 4)





## Step 5. BMS Wiring

As shown in the picture

【1】 【2】 BMS wiring harness is inserted into the PCB strip at A

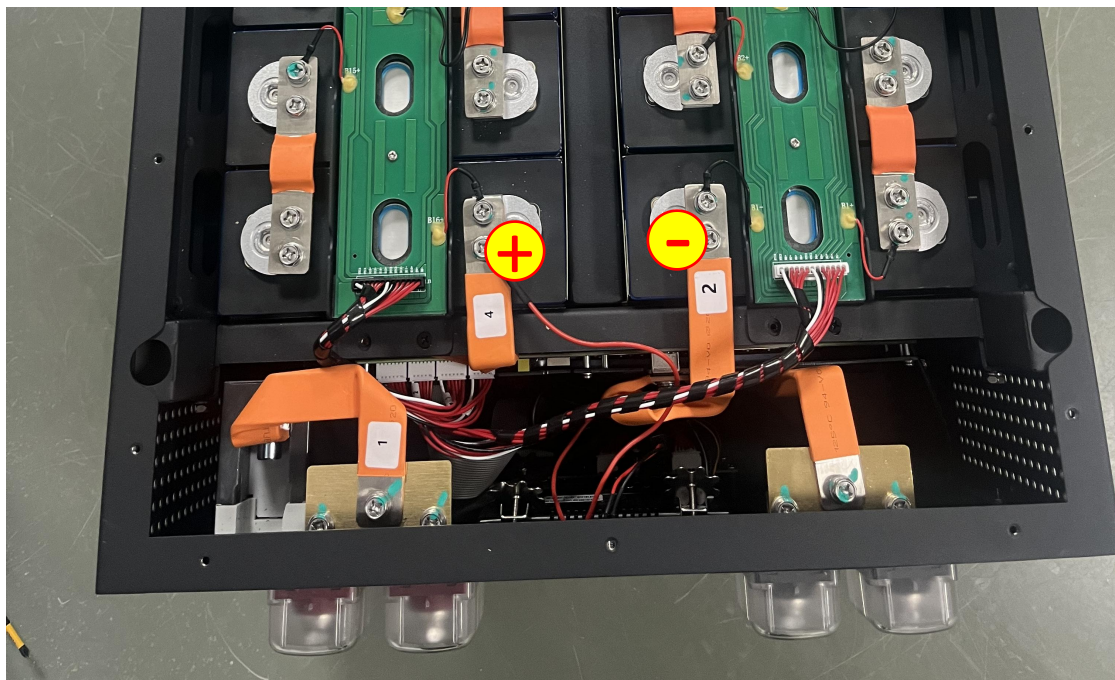
【3】 【4】 BMS wiring harness is inserted into the PCB strip at B

Attention3:

Flexible busbar connection,

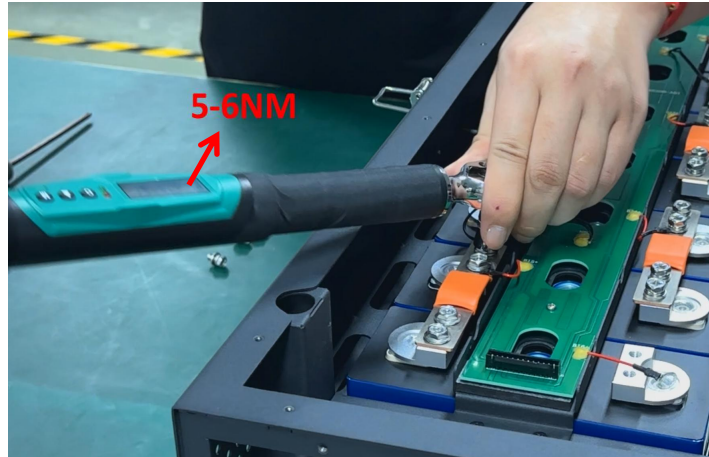
No. 4 connects to the positive pole (B)

No. 2 connects to the negative pole (A)



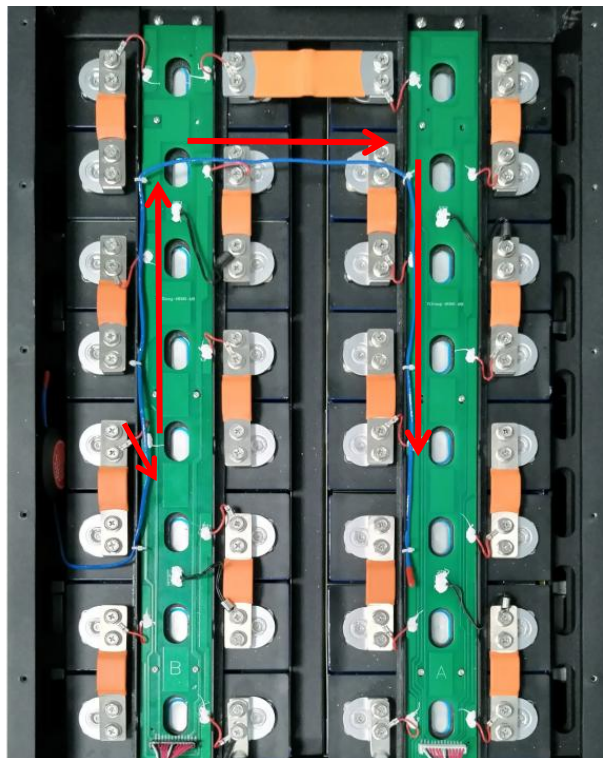
## Precautions:

1. Use 5-6NM torque to tighten the battery cell screws



2. Because our box is pre-assembled, check whether the positive and negative screws and the circuit breaker screws are locked before assembly.

3. The fire extinguishing aerosol line is installed as shown in the figure



## Step 6. Battery Pack Fix

Lock the box, box cover and front plate . And we finish assembling the 51.2V 280Ah battery pack.

